



TOREX[®]



电话: 022-27336597
传真: 022-27272895

Internet: www.fluid-controls.cn/wam/

管囊阀

PINCH VALVES

VM

00/008



适用于气力输送系统
for pneumatic conveying systems

VM管囊阀的应用范围十分广泛。它主要用于抑制例如粉尘、颗粒、纤维，液体物质的通过。运用多种管囊材质及各款型号的组合使其适用于多种行业。

应用

VM管囊阀是许多应用场合的理想设备。并有多种管囊材质可供选择，用于各种物料，

如：

- 气力输送 输送各种散料
- 食品行业 巧克力、榛子、粘稠类
- 化工行业 涂料、化肥等
- 环保行业 污水、粉尘、烟炱等
- 水处理 废水、石灰水、污水
- 建筑器械 冷却水、碱水
- 建筑行业 水泥、砂砾、灰浆
- 散料输送 水泥、面粉、饲料

The VM type pinch valve has been designed to be used in a range of applications.

Primary use is to arrest the product flow in pneumatic conveying lines, such as powders, granules, fibres and liquids.

The wide range of sleeve materials in combination with various types of bodies enable valve to be utilized in a number of industries.

Applications

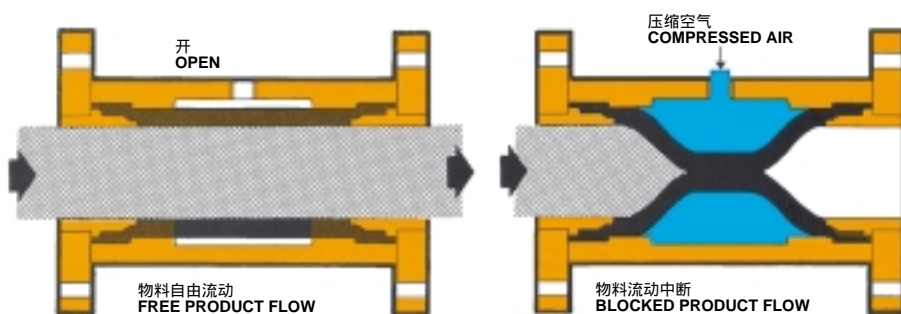
The VM pinch valve is ideal for many applications. Since various sleeve qualities are available, it can be used for virtually any kind of

media in:

- **Pneumatic conveying** for bulk goods of all kinds.
- **Food industry** for chocolate, hazelnuts, slurries, a.s.o.
- **Chemical industry** for paints, fertilizers, a.s.o.
- **Environmental engineering** for effluents, dust, soot, a.s.o.
- **Water treatment** for wastewater, milk of lime, sludges, a.s.o.
- **Apparetus construction** for cooling water, alkalis, pastes, a.s.o.
- **Building industry** for cement, sand gravel, plaster.
- **Bulk transporters** for cement, flour, foder, a.s.o.

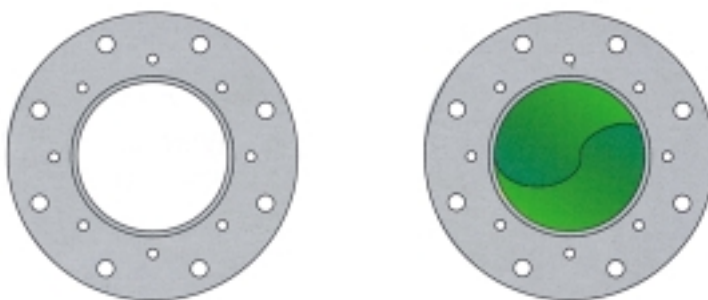
截面演示管囊阀 开 / 闭操作

CROSS SECTION SHOWING HOW PINCH VALVE OPERATES WHEN OPEN AND CLOSED



管囊阀顶视图 管囊开 / 闭

TOP VIEW OF PINCH VALVE WITH SLEEVE OPEN AND CLOSED



VM管囊阀由金属壳体和弹性内囊组成，在两法兰间内嵌织物加强固定。

阀由某种控制介质到达管囊来“关闭”，如：压缩空气和压力水。关闭管囊所需的压力差约为1.5 ~ 2bar。

根据需要，可提供多种不同型号的法兰：

- 带螺纹
- 带夹板
- 两种同时具备

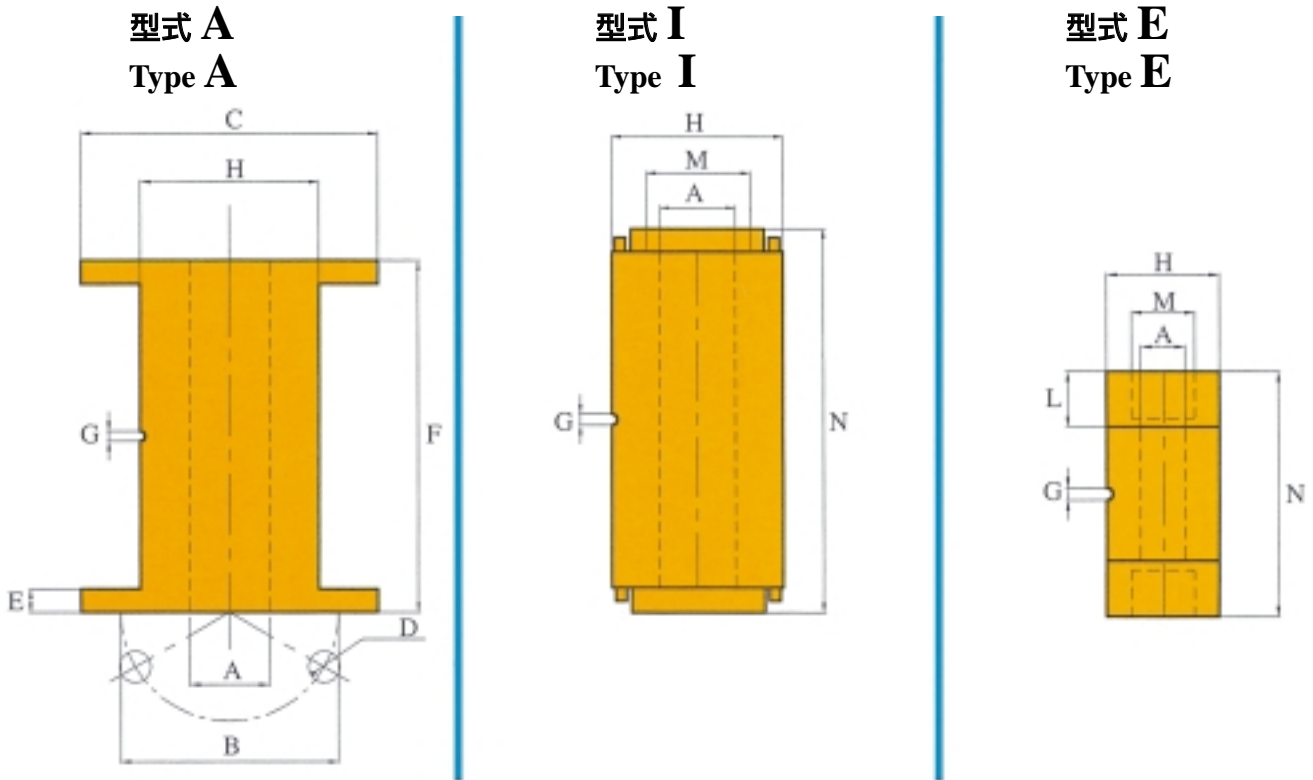
The VM pinch valve consists of a metal outer body and an inner elastomer sleeve, reinforced by a fabric inlay, fixed between two flanges

The valve is "closed" by applying a control agent, i.e. compressed air or water under pressure, to the sleeve. The required pressure interval to close the sleeve is approx. 1,5 to 2 bar

Different types of flanges are available on request:

- with threading
- with clamp
- with both

尺寸 DIMENSIONS

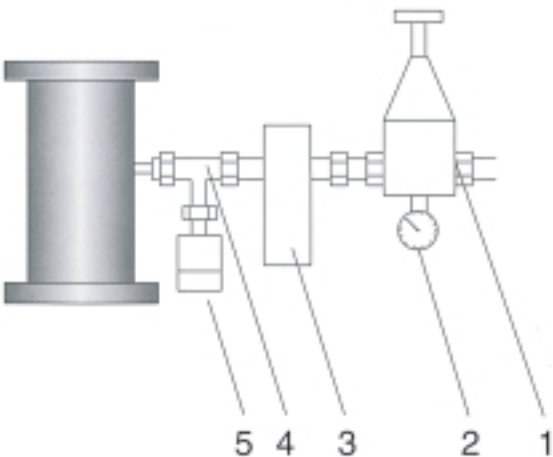


DN	A ∅	B ∅	C	D ∅	D n.	E	F	G ∅	H ∅	L	M ∅	N	kg
VM013	13							1/8	42	18	1/2"	120	0,40
VM020	20							1/8	50	20	3/4"	130	0,50
VM025	25							1/8	56	22	1"	130	0,70
VM032	32							1/8	70	25	1+1/4"	165	1,1
VM040	40	110	150	M16	4	12	178	1/8	90		1+1/2"	202	3
VM050	50	125	165	M16	4	15	190	1/4	100		2"	214	3,7
VM065	65	145	185	M16	4	15	225	1/4	115		2+1/2"	230	5,2
VM080	80	160	200	M16	4	15	270	1/4	140		3"	294	8,9
VM100	100	180	220	M16	8	15	310	1/4	160		4"	334	10,2
VM125	125	210	250	M16	8	15	350	1/4	190				12,5
VM150	150	240	285	M16	8	18	396	1/4	220				15,5
VM200	200	295	340	M16	8	25	460	1/4	275				25,7

尺寸 毫米 Dimensions in mm

管囊阀安装及维护元件

ASSEMBLY OF PINCH VALVE AND MAINTENANCE KIT



1. 空气调节器
2. 压力表
3. 电磁线圈
4. T型喷嘴
5. 压力计

- 1 Air Regulator
- 2 Manometer
- 3 Solenoid
- 4 t-Nipple
- 5 Pressure Gauge

技术特征

法兰：标准PN10

阀体：铝合金

碳钢

不锈钢304

不锈钢316

管囊材质：天然橡胶

聚氨脂

N . B . R (食品级)

氯丁橡胶

硅酮

Hypalon

Viton

EPDM

Nitrile(cyanocarbon)

操作压力：最大4bar

控制压力：最大6bar

压力差：根据不同管囊材质，

最大1.5 ~ 2bar

优点：

- 自由畅通，不漏气
- 物料与金属阀体无接触
- 无需维护
- 份量轻
- 耗气少
- 适用于管线关闭时有防爆要求的系统

TECHNICAL CHARACTERISTICS:

FLANGES:P N10 STANDARD

BODY:

aluminium alloy

carbon steel

stainless steel 304

stainless steel 316

SLEEVE MATERIALS

natural rubber

polyurethane resin

N.B.R.(food quality)

Neoprene

Silicone

Hypalon

Viton

EPDM

Nitrile(cyanocarbon)

OPERATING PRESSURE: max.4 bar

CONTROL PRESSURE: max.6 bar

DIFFERENTIAL PRESSURE: max.

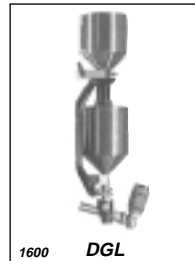
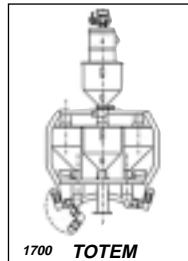
1.5 to 2 bar depending on sleeve properties

ADVANTAGES:

- free passage, full bore through, no pressure loss
- no product/metal body contact
- no maintenance
- low weight
- suitable for plants requiring explosion proof line closure



相关产品
RANGE OF PRODUCTS



注：保留修改技术规格的权利
N.B.: Rights reserved to modify technical specifications.

